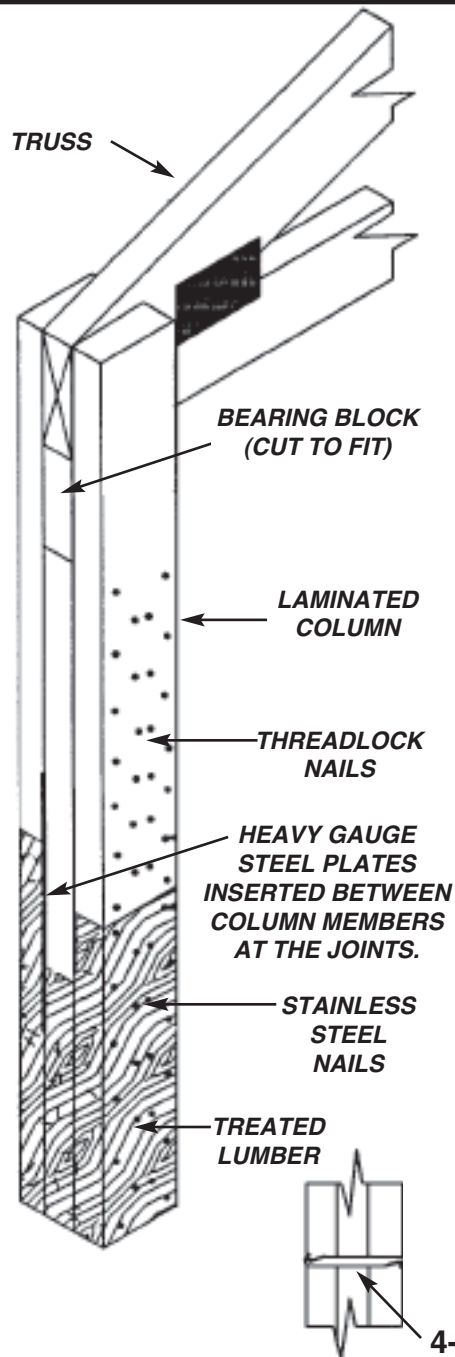


LAMINATED COLUMNS

For a quote on any item not listed below fax a quote request form to Fax # 715-876-5565.



Laminated columns are used as vertical supports in post frames construction, and can be fabricated to any length to meet your individual building specifications. The dimension of the lumber and the number of plies are determined by the building's design requirements.

Laminated columns are produced using an automated nailing machine. The machine aligns the component members with its powerful clamping system, removing normal warpage and pressing members firmly together. The machine then automatically drives the nail through and rivet clinches both ends.

In addition to the rivet clinched nails, heavy gauge steel plates are inserted between the column members at the joints of the treated and untreated material.

Treated lumber and stainless steel nails are used in the lower portion of the column that goes into the ground to resist corrosion and rot. Threadlock nails formed from helically fluted low carbon steel wire are used in the upper portion for superior holding strength.

Sidewall laminated columns are designed so the truss fits down in the notch providing a strong junction between truss and laminated column. In some cases, this junction is strong enough to eliminate the need for knee braces. The truss to laminated column fastening is determined by the building's design requirements.

Rivet clinched threadlock nails are accepted by:

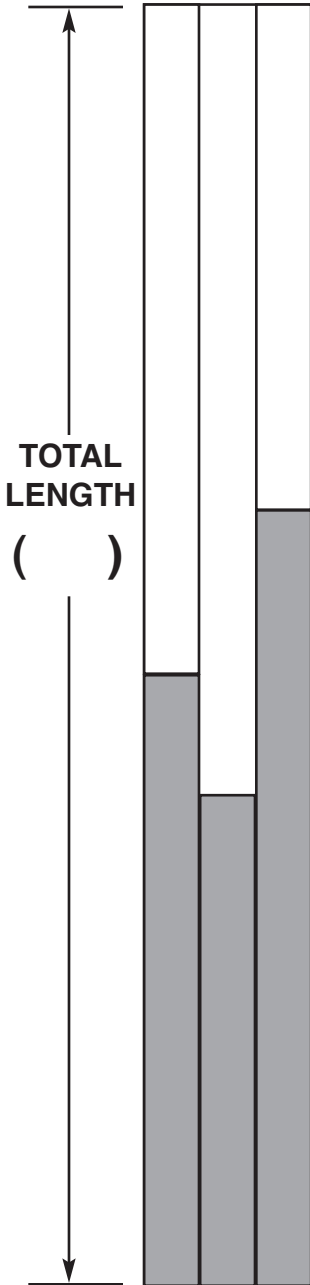
- *FHA-Federal Housing Administration*
- *ICBO-International Conference of Building Officials*
- *BOCA-Building Officials Conferences of America*
- *CMHC-Central Mortgage and Housing Corp.*

LAMINATED COLUMN WORKSHEET

For a quote on any item not listed below fax a quote request form to Fax # 715-876-5565.

STORE NAME _____
 TEAM MEMBER _____
 GUEST NAME _____
 SPECIAL ORDER _____
 CONTRACT # _____

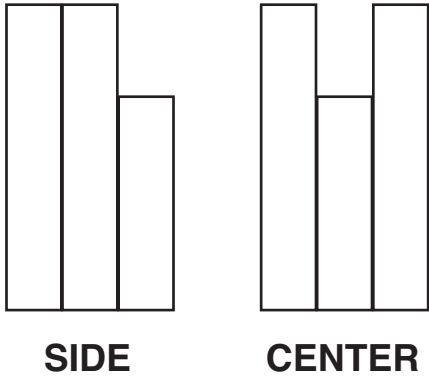
Please complete and return this form for each laminated column type on order to:
 Fax # (715) 876-5565



QTY _____

COLUMN TYPE
CIRCLE ONE
 SIDE END

TYPE OF NOTCH
CIRCLE ONE IF APPLICABLE



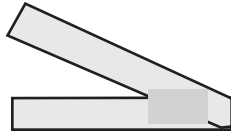
NUMBER OF PLYS
CIRCLE ONE
 3 4 _____

TRUSS INFORMATION
 NUMBER OF TRUSS PLYS
CIRCLE ONE
 1 2
 HEEL OF TRUSS
CIRCLE/FILL IN
 STD 8" OR _____"

SIZE
CIRCLE ONE
 2X6 2X8 2X10 2X12

MISCELLANEOUS POST FRAME ITEMS

For a quote on any item not listed below fax a quote request form to Fax # 715-876-5565.

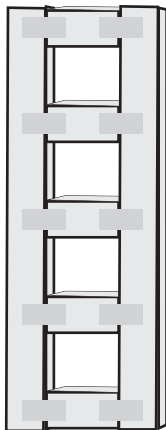
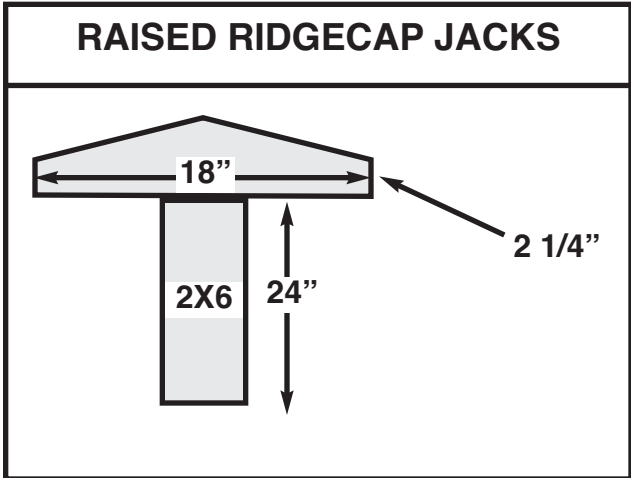


PROMPT SHIP OVERHANG JACKS		
	3/12	4/12
1'	187-6945	187-6974
2'	187-6958	187-6987
3'	187-6961	187-6990

CUSTOM QUOTE WITH MIDWEST MANUFACTURING SPECIALS



PROMPT SHIP KNEE BRACES
5' 6"
6' 6"



JAMB FRAME

FOR QUOTE REQUEST
FAX TO:
MM TRUSS SPECIALS

4/12 PROMPT SHIP 9' O.C.
For a quote on any item not listed below fax a quote request form to Fax # 715-876-5565.

LLTC=LIVE LOAD TOP CHORD	(SNOW LOAD)	=	24	30	30	35	
DLTC=DEAD LOAD TOP CHORD	(ROOFING MATERIAL)	=	4	4	5	4	
LLBC=LIVE LOAD BOTTOM CHORD	(ATTIC STORAGE)	=	0	0	0	0	
DLBC=DEAD LOAD BOTTOM CHORD	(CEILING MATERIAL)	=	1	1	5	1	
TOTAL				29# PSF	35# PSF	40# PSF	40# PSF

**9' O.C.
SPACING**

PROMPT SHIP POST FRAME TRUSSES ON HAND FOR IMMEDIATE DELIVERY!!

	SPAN	PITCH	LOAD	TRUSS SKU#	END FRAME SKU#	HEEL HEIGHT
*	20'	4/12	35#	187-7397	187-7407	7-7/8"
*	24'	4/12	35#	187-7410	187-7423	7-7/8"
*	26'	4/12	35#	187-7436	187-7449	7-7/8"
*	28'	4/12	35#	187-7258	187-7232	7-7/8"
*	30'	4/12	35#	187-7452	187-7465	7-7/8"
*	32'	4/12	35#	187-7368	187-7371	7-7/8"

TRUSSES OVER 36' REQUIRE JOBSITE DELIVERY

*	36'	4/12	35#	187-7481	187-7494	7-7/8"
*	40'	4/12	35#	187-7601	187-7614	7-7/8"
*	45'	4/12	29#	187-7782	187-7795	7-7/8"
*	50'	4/12	29#	187-7999	187-7973	10"
*	56'	4/12	29#	187-8202	187-8215	10"
*	60'	4/12	29#	187-8325	187-8309	10"

	SPAN	PITCH	LOAD	TRUSS SKU#	END FRAME SKU#	HEEL HEIGHT
*	20'	4/12	40# 35-4-1or 30-5-5	187-6738	187-7407	7-7/8"
*	24'	4/12	40# 35-4-1or 30-5-5	187-6770	187-7423	7-7/8"
*	26'	4/12	40# 35-4-1or 30-5-5	187-6783	187-7449	7-7/8"
*	28"	4/12	40# 35-4-1or 30-5-5	187-6796	187-7232	7-7/8"
*	30'	4/12	40# 35-4-1or 30-5-5	187-6806	187-7465	7-7/8"
*	32'	4/12	40# 35-4-1or 30-5-5	187-6819	187-7371	7-7/8"

TRUSSES OVER 36' REQUIRE JOBSITE DELIVERY

*	36'	4/12	40# 35-4-1or 30-5-5	187-6835	187-7494	7-7/8"
▲ *	40'	4/12	40# 35-4-1or 30-5-5	187-6851	187-7614	7-7/8"

LATERAL BRACING REQUIRED ON BOTTOM CHORD 10' O.C.

MAXIMUM TOP CHORD PURLIN SPACING 24" O.C., EXCEPT WHERE NOTED ▲

* 90 MPH WIND RATED

▲ MAXIMUM TOP CHORD PURLIN SPACING 16" O.C.

4/12 COMBO-LOAD **PROMPT SHIP** POST FRAME TRUSSES

For a quote on any item not listed below fax a quote request form to Fax # 715-876-5565.

THE PROMPT SHIP TRUSSES SHOWN BELOW ARE DESIGNED TO CARRY A 35# LOAD AT 9' O.C. **WITH 90 MPH WIND LOAD RATING** THEY CAN BE USED AT DIFFERENT SPACINGS TO ACHIEVE ADDITIONAL LOADING. USE THE CHART BELOW AS A GUIDE FOR OTHER LOADS.

IN STOCK FOR PROMPT SHIPMENT!

SPAN	TRUSS SKU#		ON CENTER (O.C.) SPACINGS						
			4' O.C.	5' O.C.	6' O.C.	7' O.C.	8' O.C.	9' O.C.	10' O.C.
*	20'	187-7397	59#	55#	49#	45#	39#	35#	29#
*	24'	187-7410	59#	55#	49#	45#	39#	35#	29#
*	26'	187-7436	59#	55#	49#	45#	39#	35#	29#
*	28'	187-7258	59#	55#	49#	45#	39#	35#	29#
*	30'	187-7452	59#	55#	49#	45#	39#	35#	29#
*	32'	187-7368	59#	55#	49#	45#	39#	35#	29#
*	36'	187-7481	59#	55#	49#	45#	39#	35#	29#
TRUSSES OVER 36' REQUIRE JOBSITE DELIVERY									
*	40'	187-7601	59#	55#	49#	45#	39#	35#	29#

	4' O.C.	5' O.C.	6' O.C.	7' O.C.	8' O.C.	9' O.C.	10' O.C.
LLTC LIVE LOAD TOP CHORD	50	50	40	40	30	30	24
DLTC DEAD LOAD TOP CHORD	4	4	4	4	4	4	4
LLBC LIVE LOAD BOTTOM CHORD	0	0	0	0	0	0	0
DLBC DEAD LOAD BOTTOM CHORD	5	1	5	1	5	1	1
TOTAL LOAD	59#	55#	49#	45#	39#	35#	29#

ALL THE ABOVE TRUSSES HAVE A 7-7/8" HEEL HEIGHT

ALL TRUSSES REQUIRE A MAXIMUM TOP CHORD PURLIN SPACING OF 2' O.C.

LATERAL BRACING ON BOTTOM CHORD 10' O.C.

*** 90 MPH WIND RATED**

4/12 HEAVY-COMBO PROMPT SHIP POST FRAME TRUSSES

For a quote on any item not listed below fax a quote request form to Fax # 715-876-5565.

THE PROMPT SHIP TRUSSES SHOWN BELOW ARE DESIGNED TO CARRY A 40# LOAD AT 9' O.C. WITH 90 MPH WIND LOAD RATING. THEY CAN BE USED AT DIFFERENT SPACINGS TO ACHIEVE ADDITIONAL LOADING. USE THE CHART BELOW AS A GUIDE FOR OTHER LOADS.

IN STOCK FOR PROMPT SHIPMENT

LLTC=LIVE LOAD TOP CHORD (SNOW LOAD)
 DLTC=DEAD LOAD TOP CHORD (ROOFING MATERIAL)
 LLBC=LIVE LOAD BOTTOM CHORD (ATTIC STORAGE)
 DLBC=DEAD LOAD BOTTOM CHORD (CEILING MATERIAL)

TC LL	TC DL	BC DL	TOTAL LOAD	SPACING
50	4	1	55	4'-0"
50	5	5	60	4'-0"
50	4	1	55	5'-0"
50	5	5	60	5'-0"
50	4	1	55	6'-0"
45	5	5	55	6'-0"
45	4	1	50	7'-0"
42	5	5	52	7'-0"
42	4	1	47	8'-0"
35	5	5	45	8'-0"
35	4	1	40	9'-0"
30	5	5	40	9'-0"
30	4	1	35	10'-0"
24	5	5	34	10'-0"

	SPAN	PITCH	TRUSS SKU#	END FRAME SKU#	HEEL HEIGHT
*	20'	4/12	187-6738	187-7407	7-7/8"
*	24'	4/12	187-6770	187-7423	7-7/8"
*	26'	4/12	187-6783	187-7449	7-7/8"
*	28'	4/12	187-6796	187-7232	7-7/8"
*	30'	4/12	187-6806	187-7465	7-7/8"
*	32'	4/12	187-6819	187-7371	7-7/8"

TRUSSES OVER 36' REQUIRE JOBSITE DELIVERY

*	36'	4/12	187-6835	187-7494	7-7/8"
▲ *	40'	4/12	187-6851	187-7614	7-7/8"

LATERAL BRACING REQUIRED ON BOTTOM CHORD 10' O.C.

▲ * 90 MPH WIND RATED
 ▲ MAXIMUM TOP CHORD PURLIN SPACING 16" O.C.



4/12 35# & 45# 10' O.C.

For a quote on any item not listed below fax a quote request form to Fax # 715-876-5565.

LLTC=LIVE LOAD TOP CHORD (SNOW LOAD)	=	30	40	
DLTC=DEAD LOAD TOP CHORD (ROOFING MATERIAL)	=	4	4	
LLBC=LIVE LOAD BOTTOM CHORD (ATTIC STORAGE)	=	0	0	
DLBC=DEAD LOAD BOTTOM CHORD (CEILING MAT)	=	1	1	
TOTAL PSF				10' O.C. SPACING

SPAN	PITCH	LOAD	TRUSS SKU#	END FRAME SKU#	HEEL HEIGHT	*LATERAL BRACING
20'	4/12	35# GSL	188-2201	187-7407	7-7/8"	0
20'	4/12	60# GSL	188-2214	187-7407	7-7/8"	0
24'	4/12	35# GSL	188-2243	187-7423	7-7/8"	0
24'	4/12	60# GSL	188-2256	187-7423	7-7/8"	0
30'	4/12	35# GSL	188-2269	187-7465	7-7/8"	0
30'	4/12	60# GSL	188-2272	187-7465	7-7/8"	0

ALL TRUSSES BELOW ARE TRI-BEARING

36'	4/12	35# GSL	188-2285	187-7494	7-7/8"	0
36'	4/12	60# GSL	188-2298	187-7494	7-7/8"	3

TRUSSES OVER 36' REQUIRE JOBSITE DELIVERY

40'	4/12	35# GSL	188-2324	187-7614	7-7/8"	0
40'	4/12	60# GSL	188-2337	187-7614	7-7/8"	0
44'	4/12	35# GSL	188-2366	187-7737	7-7/8"	3
44'	4/12	60# GSL	188-2379	187-7737	7-7/8"	5
48'	4/12	35# GSL	188-2405	187-7915	7-7/8"	3
48'	4/12	60# GSL	188-2418	187-7915	7-7/8"	7

GSL = Ground Snow Load

* ROWS OF LATERAL BRACING REQUIRED ON WEBS
 LATERAL BRACING REQUIRED ON BOTTOM CHORD 10' O.C.
 MAXIMUM TOP CHORD PURLIN SPACING 24" O.C.



POST FRAME

4/12 39.5# & 49.5# 6' O.C.

For a quote on any item not listed below fax a quote request form to Fax # 715-876-5565.

LLTC=LIVE LOAD TOP CHORD	(SNOW LOAD)	=	30	40	
DLTC=DEAD LOAD TOP CHORD	(ROOFING MATERIAL)	=	4	4	
LLBC=LIVE LOAD BOTTOM CHORD	(ATTIC STORAGE)	=	0	0	6' O.C. SPACING
DLBC=DEAD LOAD BOTTOM CHORD	(CEILING MATERIAL)	=	5.5	5.5	
TOTAL			39.5# PSF		49.5# PSF

SPAN	PITCH	LOAD	TRUSS SKU#	END FRAME SKU#	HEEL HEIGHT	*LATERAL BRACING
24'	4/12	39.5#	^187-7410	^187-7423	7-7/8"	0
24'	4/12	49.5#	^187-7410	^187-7423	7-7/8"	0
26'	4/12	39.5#	^187-7436	^187-7449	7-7/8"	0
26'	4/12	49.5#	^187-7436	^187-7449	7-7/8"	0
28'	4/12	39.5#	^187-7258	^187-7232	7-7/8"	0
30'	4/12	39.5#	^187-7452	^187-7465	7-7/8"	0
30'	4/12	49.5#	^187-7452	^187-7465	7-7/8"	0
32'	4/12	39.5#	^187-7368	^187-7371	7-7/8"	0
32'	4/12	49.5#	^187-7368	^187-7371	7-7/8"	0
36'	4/12	39.5#	^187-7481	^187-7494	7-7/8"	0
36'	4/12	49.5#	^187-6835	^187-7494	7-7/8"	2
40'	4/12	39.5#	^187-7601	^187-7614	7-7/8"	2
40'	4/12	49.5#	^187-6851	^187-7614	7-7/8"	2
45'	4/12	39.5#	188-1545	^187-7795	7-7/8"	2
45'	4/12	49.5#	188-1561	^187-7795	7-7/8"	4
48'	4/12	39.5#	188-1613	187-7915	7-7/8"	2
48'	4/12	49.5#	188-1639	187-7915	7-7/8"	4
50'	4/12	39.5#	188-1684	187-7973	10"	4
50'	4/12	49.5#	188-1707	187-7973	10"	4
52'	4/12	39.5#	188-1752	187-8037	10"	4
52'	4/12	49.5#	188-1778	187-8037	10"	6
54'	4/12	39.5#	188-1820	187-8095	10"	4
54'	4/12	49.5#	188-1846	187-8095	10"	6
56'	4/12	39.5#	^187-8202	^187-8215	10"	6
56'	4/12	49.5#	188-1914	187-8215	10"	8
60'	4/12	39.5#	^187-8325	^187-8309	10"	6
60'	4/12	49.5#	188-1985	187-8309	10"	6
**70'	4/12	39.5#	188-2036	187-8574	7-7/8"	6
**70'	4/12	49.5#	188-2052	187-8574	7-7/8"	6

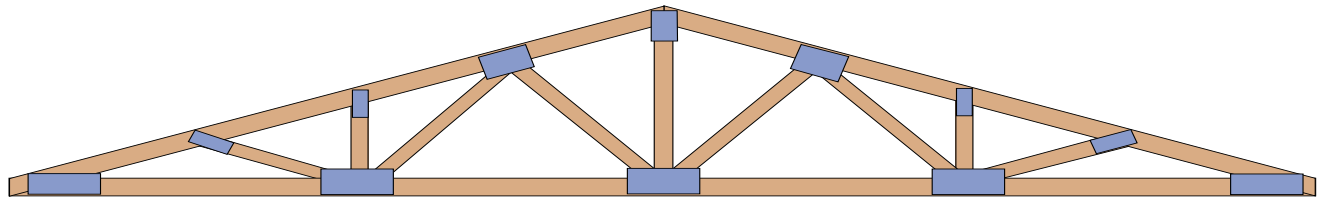
* ROWS OF LATERAL BRACING REQUIRED ON WEBS
 LATERAL BRACING REQUIRED ON BOTTOM CHORD 10' O.C. FOR ONE PLY TRUSS
 LATERAL BRACING REQUIRED ON BOTTOM CHORD 20' O.C. FOR TWO PLY TRUSS
 MAXIMUM TOP CHORD PURLIN SPACING 24" O.C. **^PROMPT SHIP TRUSSES**
 **TWO-PLY TRUSS, WILL NOT BE PLYED AT PLANT

3/12 & 4/12 POST FRAME 29# 9' O.C.

For a quote on any item not listed below fax a quote request form to Fax # 715-876-5565.

LLTC=LIVE LOAD TOP CHORD (SNOW LOAD)	=	24	
DLTC=DEAD LOAD TOP CHORD (ROOFING MATERIAL)	=	4	
LLBC=LIVE LOAD BOTTOM CHORD (ATTIC STORAGE)	=	0	9' O.C. SPACING
DLBC=DEAD LOAD BOTTOM CHORD (CEILING MAT)	=	1	

~~29# O.C.~~



SPAN	PITCH	LOAD	TRUSS SKU#	END FRAME SKU#	HEEL HEIGHT	*LATERAL BRACING
20'	3/12	29#	187-7009	187-7012	7-7/8"	0
22'	3/12	29#	187-7096	187-7038	7-7/8"	0
22'	4/12	29#	187-7106	187-7054	7-7/8"	0
24'	3/12	29#	187-7122	187-7070	7-7/8"	0
26'	3/12	29#	187-7180	187-7193	7-7/8"	2
28'	3/12	29#	187-7245	187-7216	7-7/8"	0
30'	3/12	29#	187-7300	187-7313	7-7/8"	2
34'	4/12	29#	187-7504	187-7546	7-7/8"	2

TRUSSES OVER 36' REQUIRE JOBSITE DELIVERY

38'	4/12	29#	187-7274	187-7591	7-7/8"	0
40'	3/12	29#	187-7698	187-7630	7-7/8"	0
42'	4/12	29#	187-7669	187-7672	7-7/8"	2
44'	4/12	29#	187-7711	187-7737	7-7/8"	2
45'	4/12	29#	^187-7782	^187-7795	7-7/8"	2
48'	4/12	29#	187-7931	187-7915	7-7/8"	2
52'	4/12	29#	187-8053	187-8037	10"	2
54'	4/12	29#	187-8082	187-8095	10"	2

* ROWS OF LATERAL BRACING REQUIRED ON WEBS
 LATERAL BRACING REQUIRED ON BOTTOM CHORD 10' O.C. FOR ONE PLY TRUSS
 MAXIMUM TOP CHORD PURLIN SPACING 24" O.C. **^PROMPT SHIP TRUSSES**